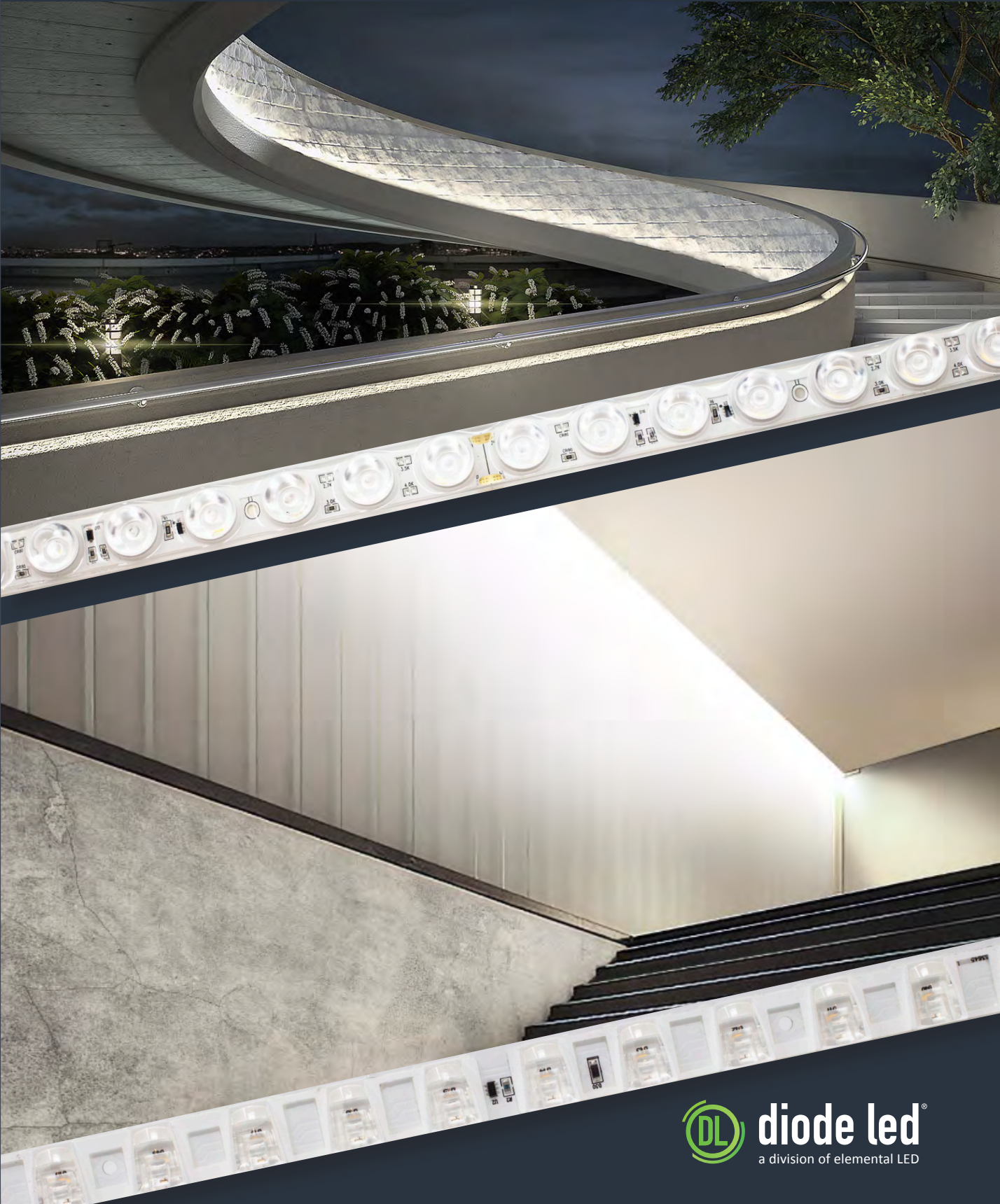




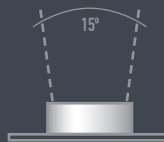
OPTICS by Diode LED®

FOCUSED LINEAR LIGHTING FOR GRAZING, WALL
WASHING, AND ARCHITECTURAL ACCENTS



NARROW BEAM 15°

SKU	CCT	LUMENS / FT.
DI-24V-N09-30K-NA-10		3000K 678
DI-24V-N09-35K-NA-10		3500K 690



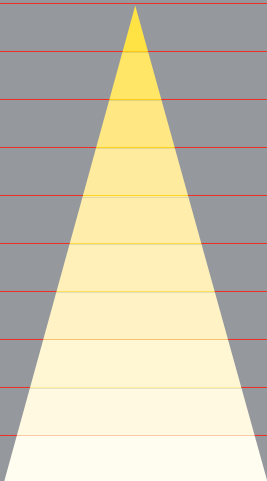
Max. Run: 10 ft.
Cut Points: 6 in.
Wattage: 8.3W/ft

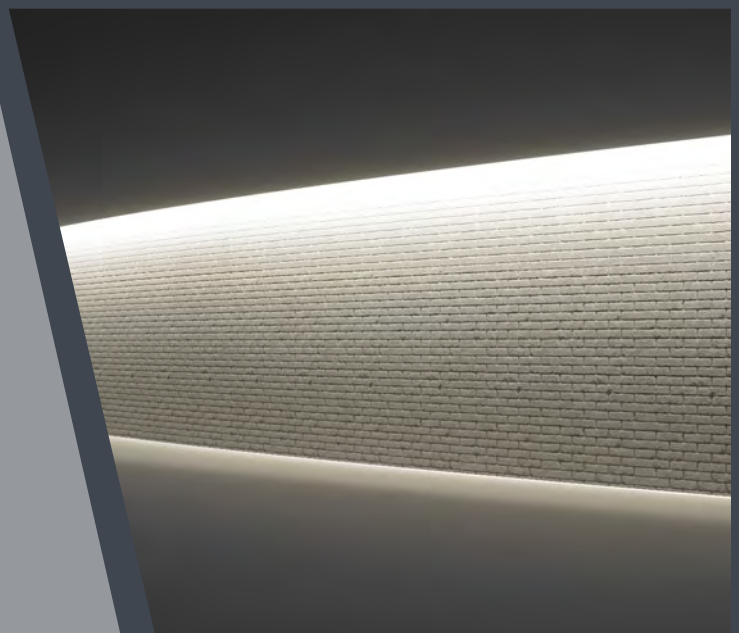


OPTICS BY DIODE LED

WALL GRAZING APPLICATION

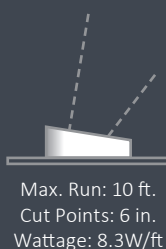


Distance to Illuminated Surface	OPTICS By Diode LED Narrow Beam	Beam Spread
1 ft.		0.26 ft.
2 ft.		0.53 ft.
3 ft.		0.79 ft.
4 ft.		1.05 ft.
5 ft.		1.31 ft.
6 ft.		1.58 ft.
7 ft.		1.84 ft.
8 ft.		2.10 ft.
9 ft.		2.39 ft.
10 ft.		2.63 ft.



ASYMMETRICAL BEAM

SKU	CCT	LUMENS / FT.
DI-24V-N09-30K-AS-10	3000K	664
DI-24V-N09-35K-AS-10	3500K	652



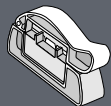
OPTICS BY DIODE LED



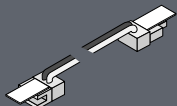
Distance to Illuminated Surface	OPTICS By Diode LED Asymmetrical Beam	Beam Spread
1 ft.		2.66 ft.
2 ft.		5.77 ft.
3 ft.		7.98 ft.
4 ft.		10.64 ft.
5 ft.		13.32 ft.
6 ft.		15.95 ft.
7 ft.		18.62 ft.
8 ft.		21.28 ft.
9 ft.		23.93 ft.
10 ft.		26.59 ft.



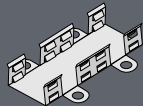
ACCESSORIES



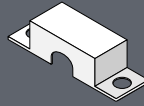
Flex Strip
Cutter



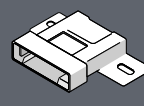
12" Male to Female
Extension Cable



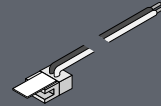
Mounting Clips



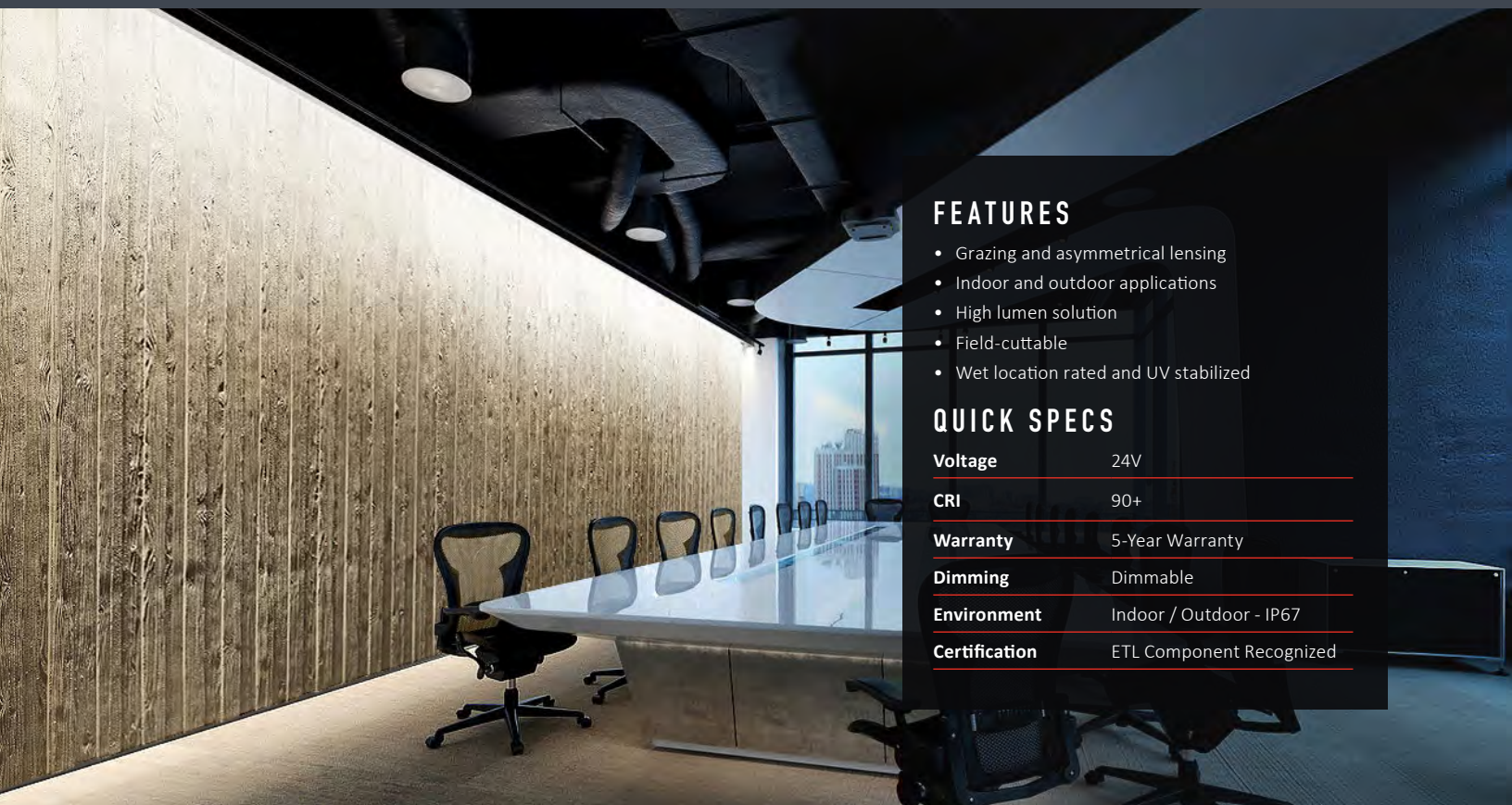
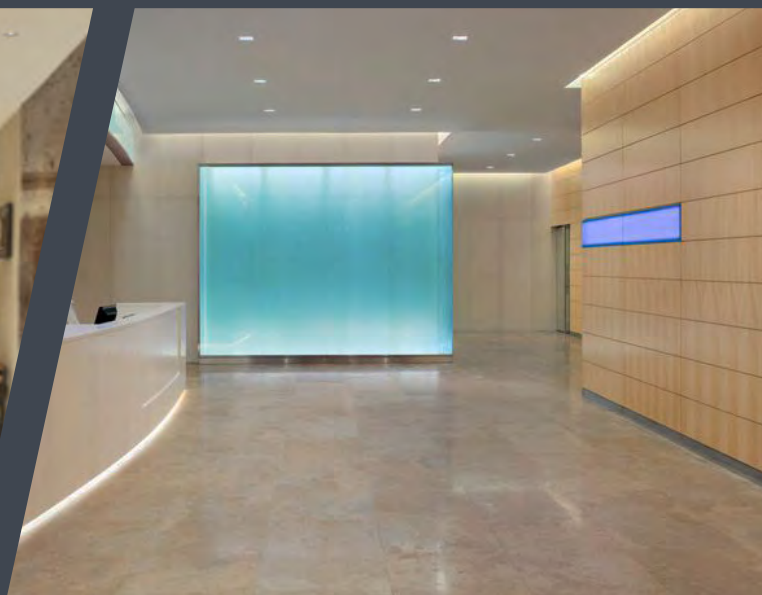
Cable Strain
Relief



Termination
Cap



72" AVX Splice
Connector



FEATURES

- Grazing and asymmetrical lensing
- Indoor and outdoor applications
- High lumen solution
- Field-cuttable
- Wet location rated and UV stabilized

QUICK SPECS

Voltage	24V
CRI	90+
Warranty	5-Year Warranty
Dimming	Dimmable
Environment	Indoor / Outdoor - IP67
Certification	ETL Component Recognized